



SPECIALTY

TABLE OF CONTENTS

GREASE GUNS	878
TUBING & FLARING TOOLS	879
FEELER GAUGE SETS	880-883
FEELER GAUGES	882
RETRIEVING TOOLS	884
MIRRORS.	884-885
PICKUP TOOLS	885
STUD EXTRACTORS	886
SCREW EXTRACTORS	887
BOLT EXTRACTOR SET	888
PULLERS	889-890



ALUMINUM LED/UV DUAL LIGHT

- › Tough aluminum housing is anodized inside and out.
- › Patterned, rugged handle for firmer grip and resists corrosion.
- › Up to 100,000 hours of service.
- › High-impact polycarbonate lens.
- › Magnetic base.
- › UL AC charger and 12V cigarette charger included.
- › 1.5W LED flashlight head rated at 130 lumens.
- › 33 bright white LED rated at 80 lumens.
- › 20 UV LED rated at 390NM.



Product #	Diameter Maximum (in)	Voltage	Lumens	Overall Length (in)	Weight (lbs)	Battery Type
JFC98266D	1-45/64	12V/110V	1.5W LED flashlight head rated at 130 lumens; 33 bright white LED rated at 80 lumens; 20 UV LED rated at 390NM	15-1/2	1.05	NiMh internal battery

CONTINUOUS SHOT AIR GREASE GUN

- › Heavy-duty cast aluminum body with comfortable cushion-grip.
- › 3-way loading: bulk, 14 oz. cartridge, and filler pump.
- › Bleeder valve for purging unwanted air.
- › 40:1 ratio.
- › Output per stroke: 2 ml.
- › Output pressure: 3,600 PSI.



Product #	Overall Length (in)	Weight (lbs)
JFC63HD	16-3/32	4.05

HEAVY-DUTY SINGLE SHOT AIR GREASE GUN

- › Heavy-duty composite body with comfortable cushion-grip.
- › 3-way loading: bulk, 14 oz. cartridge, and filler pump.
- › Bleeder valve for purging unwanted air.
- › 40:1 ratio.
- › Output per stroke: 2 ml.
- › Output pressure: 3,600 PSI.



Product #	Overall Length (in)	Weight (lbs)
JFC53HD	16-13/32	3.22

HEAVY-DUTY PISTOL GRIP GREASE GUN

- › 3-way filling: bulk, cartridge, or filler pump.
- › 16 oz. bulk fill.
- › 14 oz. standard cartridge.
- › Heavy-duty 1.7 mm thick seamless barrel to avoid dents.
- › Aluminum head reduces weight.
- › Heavy-duty flexible 18" nylon hose and 6" metal spout for easy use.
- › Output pressure: 3,600 PSI.



Product #	Overall Length (in)	Weight (lbs)
JFC33HD	16	3.86



SUCTION GUN

- ▶ Heavy-duty, 16 oz. capacity, 1.7 mm thick seamless barrel with textured finish.
- ▶ 12" clear flexible tube.
- ▶ Heavy-duty "T" handle with finger grooves for easy use.



Product #	Overall Length (in)	Weight (lbs)
JFC19HD	14-51/64	2.35

TUBING CUTTING AND FLARING SET

Product #: **J349**

- ▶ Cuts tubing from 1/8" through 1-1/8" O.D. and puts 45° flare on tubing 3/16" through 5/8".

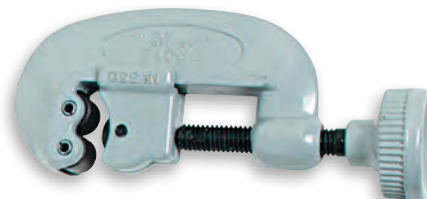


Contents	Description
J350	Tubing Cutter
J351V	Flaring Block
J351Y	Flaring Yoke
J4029	Steel Storage Box

Weight (lbs): 4.40

TUBING CUTTER

- ▶ Cuts metal tubing from 1/8" through 1-1/8" O.D. quickly and cleanly.
- ▶ Features heat-treated alloy steel cutting blade, special rollers, and heavy-duty screw mounted in durable steel frame.
- ▶ Large screw-knob and retractable tubing reamer.



Product #	Diameter Dial	Weight (lbs)
J350	350c	0.82

TUBING FLARING TOOL

- ▶ A complete flaring tool for tubing 3/16" through 5/8" O.D.
- ▶ Includes multiple hole 45° V-block and flaring yoke with hardened, polished, ball-bearing mounted cone.
- ▶ Ideal for use on copper tubing; not recommended for use on steel applications.



Product #	V-Block Only	Yoke Only	Weight (lbs)
J351	351V	351Y	0.82

9 BLADE STANDARD FEELER GAUGE SET

Product #: **J000A**

- › Contains 9 short 3 inch blades in steel holder.
- › Sizes: .003", .004", .005", .006", .008", .010", .012", .015", .018".
- › Blades etched with both decimal size and metric equivalent.
- › Weight (lbs): 0.07

INCH 



9 BLADE METRIC FEELER GAUGE SET

Product #: **J00MM9**

- › 1/2" x 3" metric blades in steel holder.
- › Sizes: 0.06 mm, 0.10 mm, 0.15 mm, 0.20 mm, 0.30 mm, 0.35 mm, 0.40 mm, 0.50 mm, 0.60 mm.
- › Weight (lbs): 0.09

MM 



15 BLADE METRIC FEELER GAUGE SET

Product #: **J00MM15**

- › 1/2" x 3" metric blades in steel holder.
- › Sizes: 0.06 mm, 0.07 mm, 0.08 mm, 0.10 mm, 0.15 mm, 0.20 mm, 0.25 mm, 0.30 mm, 0.35 mm, 0.40 mm, 0.45 mm, 0.50 mm, 0.55 mm, 0.60 mm, 0.70 mm.
- › Weight (lbs): 0.13

MM 



25 BLADE MASTER FEELER GAUGE SET

Product #: **J000AA**

- › 1/2" x 3" blades in steel holder.
- › Sizes: .0015" thru .040" except .019".
- › Blades etched with both decimal size and metric equivalent.
- › Weight (lbs): 0.19

INCH 



25 BLADE METRIC FEELER GAUGE SET

Product #: **J00MM25**

- › 1/2" x 3" metric blades in steel holder.
- › Sizes: 0.04 mm, 0.05 mm, 0.06 mm, 0.07 mm, 0.08 mm, 0.09 mm, 0.10 mm, 0.15 mm, 0.20 mm, 0.25 mm, 0.30 mm, 0.35 mm, 0.40 mm, 0.45 mm, 0.50 mm, 0.55 mm, 0.60 mm, 0.65 mm, 0.70 mm, 0.75 mm, 0.80 mm, 0.85 mm, 0.90 mm, 0.95 mm, 1.00 mm.
- › Weight (lbs): 0.22

MM 





22 BLADE STEP CUT FEELER GAUGE SET

Product #: **J000N**

- › "Go / no-go" 1/2" x 3-5/16" blades in steel holder.
- › Each blade has two different thicknesses.
- › Sizes: .004/.006", .005/.007", .006/.008", .007/.009", .008/.010", .009/.011", .010/.012", .011/.013", .012/.014", .013/.015", .014/.016", .015/.017", .016/.018", .017/.019", .018/.020", .019/.021", .020/.022", .021/.023", .022/.024", .023/.025", .024/.026", .025/.027".
- › Blades etched with both decimal size and metric equivalent.
- › Weight (lbs): 0.19

INCH



FEELER GAUGE SETS

11 BLADE BENT FEELER GAUGE SET

Product #: **J000M**

- › 1/2" x 4" blades with a 1" bend in steel holder.
- › Sizes: .006", .008", .010", .011", .012", .013", .014", .015", .018", .019", .020".
- › Blades etched with both decimal size and metric equivalent.
- › Blades are offset at a right angle to help protect hands from a hot manifold while setting an overhead valve.
- › Weight (lbs): 0.13

INCH



12 BLADE LONG FEELER GAUGE SET

Product #: **J000SL**

- › 1/2" x 12" blades in steel holder.
- › Sizes: .0015", .002", .003", .004", .005", .006", .008", .010", .012", .014", .015", .020".
- › Blades etched with both decimal size and metric equivalent.
- › Weight (lbs): 0.30

INCH



25 BLADE LONG FEELER GAUGE SET

Product #: **J000TL**

- › 1/2" x 12" blades in steel holder.
- › Sizes: .0015", .002", .003", .004", .005", .006", .007", .008", .009", .010", .011", .012", .013", .014", .015", .016", .017", .018", .019", .020", .021", .025", .027", .030", .040".
- › Blades etched with both decimal size and metric equivalent.
- › Weight (lbs): 0.72

INCH



6 BLADE NON-MAGNETIC FEELER GAUGE SET

Product #: **J008R**

- › Contains non-magnetic brass feeler blades for checking the air gap in electronic ignition systems for all weather conditions.
- › 1/2" x 3" blades in steel holder.
- › Sizes: .006", .008", .010", .012", .014", .016".
- › Blades etched with both decimal size and metric equivalent.
- › Weight (lbs): 0.08



SHORT BLADE HOLDER

Product #: **J000C**

- › Large enough to accommodate all 26 short blades.
- › Weight (lbs): 0.05



SHORT BLADE FEELER GAUGES

Product #	Blade Thickness (in)	Weight (lbs)
J0015	0.0015	0.01
J002	0.002	0.01
J003	0.003	0.01
J004	0.004	0.04
J005	0.005	0.01
J006	0.006	0.01
J007	0.007	0.01
J008	0.008	0.02
J009	0.009	0.01
J010	0.010	0.02



LONG BLADE FEELER GAUGES

Product #	Blade Thickness (in)	Weight (lbs)
J0015L	0.0015	0.01
J002L	0.002	0.01
J003L	0.003	0.03
J004L	0.004	0.01
J005L	0.005	0.01
J006L	0.006	0.02
J008L	0.008	0.02
J010L	0.010	0.02
J015L	0.015	0.03





10 BLADE IGNITION FEELER GAUGE SET

Product #: **J000D**

- › 1/4" x 1-3/4" blades in steel holder.
- › Sizes: .013", .015", .017", .018", .020", .025", .030", .032", .035", .040".
- › Blades etched with both decimal size and metric equivalent.
- › Weight (lbs): 0.06

INCH



16 BLADE OVERHEAD VALVE FEELER GAUGE SET

Product #: **J000R**

- › 1/2" wide bent gauges for setting overhead valves.
- › Sizes: .009", .010", .011", .014", .015", .016", .017", .018", .019", .020", .021", .023", .024", .025", .026", .027".
- › Blades are bent at a 45° angle to help protect hands from a hot manifold while setting an overhead valve.
- › Blades etched with both decimal size and metric equivalent.
- › Weight (lbs): 0.25

INCH



HIGH ENERGY SPARK PLUG GAP GAUGE SET

Product #: **J000J**

- › For use in setting gaps and spark plugs with high energy ignition systems.
- › Includes blade holder, electrode bender and six bent wire gauges in sizes .044", .045", .050", .054", .060", .080".
- › Gauges marked with both decimal size and metric equivalent.
- › Weight (lbs): 0.08

INCH



SPARK PLUG GAP GAUGE SET

Product #: **J000K**

- › Spark plug electrode bender and eight bent wire gauges in sizes .020", .022", .025", .027", .028", .030", .035", .040".
- › Gauges marked with both decimal size and metric equivalent.
- › Weight (lbs): 0.07

INCH



FLEXIBLE RETRIEVING AND HOLDING TOOLS

- › Designed to position or retrieve small objects.
- › Spring-loaded plunger actuates jaws at end of flexible casing.



Product #	Overall Length (in)	Weight (lbs)
J2344	13-1/2	0.19
J2345	23-1/2	0.26



FLEXIBLE MAGNETIC RETRIEVING TOOLS

- › Retrieves small objects from hard-to-reach places.
- › Push button allows reaching an object before energizing the magnet.



Product #	Lift Power (lbs)	Overall Length (in)	Weight (lbs)
J2377	1.50	19-1/2	0.27
J2378	3.00	24-1/2	0.37

POCKET MAGNETIC RETRIEVING TOOLS

- › J2375 includes versatile telescoping handle and all-angle ball joint.
- › J2376A has an aluminum head that contains a neodymium magnet that can lift up to 1-1/2 lbs, all angle ball joint, and a pocket clip.



J2375



J2376A

Product #	Overall Length (in)	Weight (lbs)
J2375	16-3/4 to 26-3/4	0.40
J2376A	8	0.08



INSPECTION MIRRORS

- › Versatile all-angle ball joint.
- › Features telescoping handle (J2372 and J2373).
- › With pocket clip (J2373).



J2374



J2371



J2373

Product #	Mirror Shape	Mirror Size (L x W in)	Mirror Diameter (in)	Overall Length (in)	Weight (lbs)
J2370	Circular	-	7/8	7-1/2	0.08
J2374	Circular	-	1-1/4	8	0.09
J2372	Circular	-	2-1/4	10 to 14	0.25
J2371	Oval	1 x 2	-	8-3/4	0.08
J2373	Rectangular	2-1/8 x 3-1/2	-	11-1/4 to 15-1/2	0.30





LONG REACH INSPECTION MIRRORS



Product #	Mirror Shape	Mirror Diameter (in)	Overall Length (in)	Weight (oz)	Replacement Mirror
J2370XL	Circular	7/8	8.5 - 30.25	1.3	J2370XLR
J2372XL	Circular	2-1/4	6.5 - 36.375	3.8	J2372XLR
J2374XL	Circular	1-1/4	6.5 - 35	3.8	J2374XLR
J2382XL	Circular	3-1/4	6.5 - 29.5	4.5	J2382XLR
J2383XL	Circular	1-1/4	5.75 - 27.25	1.5	J2374XLR
J2373XL	Rectangular	2-9/16 X 3-3/4	6.75 - 29.75	4.0	J2373XLR

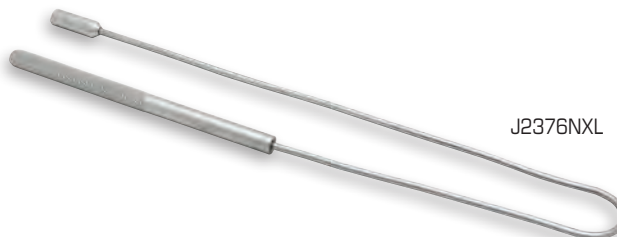


LONG REACH MAGNETIC PICKUP TOOLS

Product #	Type	Overall Length (in)	Max. Lift (lbs)	Weight (oz)
J2375XL	-	5.5 - 25.5	1.5	1.2
J2376NXL	Flexible	21.56	1.5	1.2
J2376XL	-	7.25 - 33.75	3.5	2.8
J2377XL	Flexible	29	5	4.3
J2378XL	-	8.25 - 30.25	5	1.9
J2379XL	-	8.25 - 30.25	16	3.9



J2375XL



J2376NXL

ALL-PURPOSE BRAKE PLIERS

- › Easily installs and removes brake shoe retaining spring on drum brakes.
- › Socket end removes spring from anchor stud.
- › Notched and installs spring on anchor.

Product #	Overall Length (in)	Weight (lbs)
J217	12-7/8	1.05



FACOM® STUD EXTRACTORS EXTERNAL CAM/KNURL TYPE



- › Turn extractor with a ratchet, wrench, or socket to engage the cam and stud, then pull out stud.
- › 1/2" and 1/4" drive capacity.
- › Knurled wheel grips stud when pressure is applied.
- › Hex drive can be driven with wrench or ratcheting tool.
- › Ideal for bolts with rusted, corroded, or stripped threads.
- › Heavy-duty finish.



Product #	Drive Size (in)	Capacity (in)	Capacity (mm)	Overall Length (in)	Weight (lbs)
FA-286A	1/2	3/4	20	2-5/32	0.86
FA-286A.PL	3/4	1	27	2-15/16	2.11

FACOM® 5 PIECE STUD EXTRACTOR ROLLER SET



Product #: **FA-287B.JS5**

- › 5 Stud drivers for sizes M6, M7, M8, M9 and M10.
- › Supplied in a CKS rack.



Contents	Description	Overall Length (in)
FA-287B.6	Stud Extractor, Internal Cam/Roller Type M6	2-3/4
FA-287B.7	Stud Extractor, Internal Cam/Roller Type M7	2-3/4
FA-287B.8	Stud Extractor, Internal Cam/Roller Type M8	2-3/4
FA-287B.9	Stud Extractor, Internal Cam/Roller Type M9	3-5/32
FA-287B.10	Stud Extractor, Internal Cam/Roller Type M10	3-5/32

Weight (lbs): 2.58

FACOM® STUD EXTRACTORS INTERNAL CAM/ROLLER TYPE



- › Designed to grip studs using cam assemblies.
- › Capacity ranging from 6-16 mm.
- › 1/2" drive.
- › Full polish finish.



Product #	Drive Size (in)	Capacity (in)	Capacity (mm)	Overall Length (in)	Weight (lbs)
FA-287B.6	1/2	15/64	6	2-3/4	0.38
FA-287B.7	1/2	9/32	7	2-3/4	0.38
FA-287B.8	1/2	5/16	8	2-3/4	0.38
FA-287B.9	1/2	23/64	9	3-5/32	0.56
FA-287B.10	1/2	25/64	10	3-5/32	0.55
FA-287B.12	1/2	15/32	12	3-5/32	0.53
FA-287B.14	1/2	35/64	14	2-15/16	0.76
FA-287B.16	1/2	5/8	16	2-15/16	0.69



10 PIECE SCREW EXTRACTOR SET

Product #: J9500B

- › Drive into end of broken pipe or fitting.
- › Use tap holder or wrench on extractor to turn out broken part.
- › Size stamped on extractor refers to drill bit size to be used with that extractor.

Contents	Description	Overall Length (in)
J9521	Screw, Extractor 1/8"	2-5/16
J9522	Screw, Extractor 3/16"	2-5/8
J9523	Screw, Extractor 15/64"	2-7/8
J9524	Screw, Extractor 5/16"	3
J9525	Screw, Extractor 3/8"	3-1/4
J9525B	Screw, Extractor 15/32"	3-7/8
J9526	Screw, Extractor 9/16"	4-1/4
J9527	Screw, Extractor 21/32"	4-7/8
J9528	Screw, Extractor 13/16"	5-3/8
J9529	Screw, Extractor 1-1/16"	5-1/2

Weight (lbs): 4.50



SCREW EXTRACTORS

5 PIECE SCREW EXTRACTOR SET

Product #: J9500A

- › Drive into end of broken pipe or fitting.
- › Use tap holder or wrench on extractor to turn out broken part.
- › Size stamped on extractor refers to drill bit size to be used with that extractor.

Contents	Description	Overall Length (in)
J9521	Screw, Extractor 1/8"	2-5/16
J9522	Screw, Extractor 3/16"	2-5/8
J9523	Screw, Extractor 15/64"	2-7/8
J9524	Screw, Extractor 5/16"	3
J9525	Screw, Extractor 3/8"	3-1/4
J25TR49C	Tool Roll 5 Pockets	6-3/32

Weight (lbs): 0.28



SCREW EXTRACTORS

- › Drive into end of broken pipe or fitting.
- › Use tap holder or wrench on extractor to turn out broken part.
- › Size stamped on extractor refers to drill bit size to be used with that extractor.



Product #	U.S.S. (in)	Drill Size (in)	Diameter Minimum (in)	Diameter Maximum (in)	Overall Length (in)	Weight (lbs)
J9521	1/4, 5/16	1/8	1/8	3/16	2-5/16	0.02
J9522	3/8	3/16	11/64	3/16	2-5/8	0.02
J9523	7/16	15/64	13/64	1/4	2-7/8	0.05
J9524	1/2, 9/16	5/16	19/64	5/16	3	0.07
J9525	5/8	3/8	11/32	3/8	3-1/4	0.12
J9525B	3/4	15/32	1/8	1/8	3-7/8	0.18
J9526	7/8	9/16	1/2	1/2	4-1/4	0.29
J9527	1, 1-1/8	21/32	19/32	5/8	4-7/8	0.47
J9528	1-1/4, 1-3/8	13/16	23/32	3/4	5-3/8	0.72
J9529	1-1/2	1-1/16	31/32	1	5-1/2	1.30



10 PIECE BOLT EXTRACTOR SOCKET SET

Product #: **J69X00**

- › Proto® Bolt Extractor Sockets make it easy to remove rusted, rounded, or damaged nuts and bolts.
- › The working end has a helical shaped flute to help grip rounded fasteners, round head bolts, and pan head screws.
- › Proto® Bolt Extractor Sockets can be used in combination with other drive tools (such as ratchets, adjustable wrenches, sockets, or combination wrenches) to help reach fasteners in difficult locations.
- › Through-hole design helps gain access to fasteners at the end of long bolts or studs.
- › Can be used on SAE or metric fasteners.
- › 3/4" Drive size.
- › Weight (lbs): 0.86



Contents	Description	Drive End Outside Diameter (in)	Nut End Outside Diameter (in)	Nut Depth (in)	Overall Length (in)	Weight (lbs)
J69X09	Extractor, Socket 7 mm, 1/4", 9/32"	7/16	11/16	9/16	1-1/16	0.05
J69X10	Extractor, Socket 8 mm, 5/16"	31/64	11/16	9/16	1-1/16	0.05
J69X11	Extractor, Socket 9 mm, 11/32"	17/32	11/16	33/64	1-1/16	0.06
J69X12	Extractor, Socket 3/8"	9/16	11/16	33/64	1-1/16	0.06
J69X13	Extractor, Socket 10 mm, 13/32"	19/32	11/16	33/64	1-1/16	0.06
J69X14	Extractor, Socket 11 mm, 7/16"	21/32	11/16	33/64	1-1/16	0.07
J69X15	Extractor, Socket 12 mm, 15/32"	11/16	3/4	33/64	1-1/16	0.08
J69X16	Extractor, Socket 13 mm, 1/2"	3/4	3/4	33/64	1-1/16	0.09
J69X18	Extractor, Socket 14 mm, 9/16"	11/16	7/8	33/64	1-1/16	0.09
J69X20	Extractor, Socket 15 mm, 16 mm, 5/8"	59/64	15/16	33/64	1-1/16	0.10



FEATURES AND BENEFITS – BOLT EXTRACTORS

- › 18-30 teeth in a hexagonal configuration help grip rounded hexagonal fasteners, round head bolts and pan head screws.
- › Low profile design helps gain access to fasteners in tight spaces.
- › The non-working end can be turned with wrenches or sockets.
- › Can be used in combination with other drive tools (such as extensions, universal joints or ratchets with short arc swings) to help reach fasteners in difficult locations.
- › Sizes range from 1/4" - 5/8" and 7 - 16 mm. Each socket can turn multiple fastener sizes.
- › Can be used on fractional or metric fasteners.



- › Easily remove rusted, rounded or damaged nuts and bolts.
- › Through-hole design helps gain access to fasteners at the end of long bolts or studs.



3/8" DRIVE 13 PIECE HAND IMPACT DRIVER SET

Product #: **J7099A**

- › Designed to loosen hard to turn bolts and nuts.
- › Hand impact driver has heavy-duty spring for added torque.
- › Popular interchangeable bits are packaged in plastic blow-molded box for easy storage.



Contents	Description	Overall Length (in)
J7099	Driver, Hand Impact 3/8" DR 5-1/2"	5-1/2
J60002	Bit, Insert #1 Phillips 1/4" Hex	1
J60008	Bit, Insert #2 Phillips 1/4" Hex	1
J60020	Bit, Insert #3 Phillips 1/4" Hex	1
J60202	Bit, Insert 3/16" Slotted 1/4" Hex	1
J60208	Bit, Insert 9/32" Slotted 1/4" Hex	1
J60050	Bit, Insert #1 Phillips 5/16" Hex	1-1/4
J60052	Bit, Insert #2 Phillips 5/16" Hex	1-1/4
J60054	Bit, Insert #3 Phillips 5/16" Hex	1-1/4
J60256	Bit, Insert 3/16" Slotted 5/16" Hex	1-1/2
J60262	Bit, Insert 9/32" Slotted 5/16" Hex	1-1/2
J6930	Bit, Holder Power 3/8" DR 5/16" Hex	1-5/16
J6931	Bit, Holder Power 3/8" DR 1/4" Hex	1-1/4

Weight (lbs): 2.36



SPECIALTY PULLERS

BATTERY CABLE AND SMALL BEARING PULLER

- › Uses toggle-type action to grip onto all standard post battery terminals.
- › Pulls small bearings and gears with 1" reach and spread.

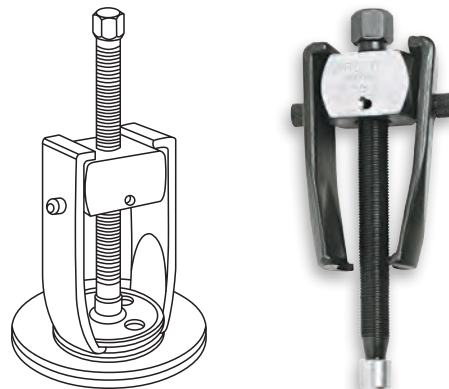


Product #	Weight (lbs)
J4041	0.65



PULLEY PULLER

- › For removing single and two-groove pulleys from alternators and power steering pumps.
- › Two position yoke permits pulling bearings on both standard and heavy-duty alternators.



Product #	Weight (lbs)
J4053	2.10



CLOSE QUARTERS PILOT BEARING PULLER

- › Designed to pull flywheel pilot bearings with inside diameters 1/2" to 1-1/2".
- › Removes bearings and bushings from starters, generators, magnetos, and small electric motors.



Product #	Weight (lbs)
J4059	2.30

10-WAY PROTO-EASE™ ADVANTAGE SLIDE HAMMER PULLER SET

Product #: **J5040**

Description	Qty.
Hex Jam Nut (5/16"-24)	3
Hex Jam Nut (5/8"-18)	1
Hex Head Cap Screw (5/16"-24)	3
Puller Head	1
Adjusting Cone	1
Forcing Screw	1
2-Way Crossarm	1
Pulling Hook	1
Pulling Adapter-Machine	1
Pilot Bearing Puller Jaw	3
5 lbs Slide Hammer	1
Puller Arm	1
Medium Puller Jaw	3
Long Puller Jaw	3
Self Tapping Screw	1
Adapter For Adjustable Jaw Wrench	1
Retainer	1
Shank and Tee Bar Assembly	1
Sleeve (5/8"-18)	1
Forcing Screw	1
Front Hub Remover	1
Blow-Molded Case	1
Weight (lbs): 25.00	

- › Slide hammer puller set packaged in a convenient plastic blow-molded carrying/storage case.



REVERSIBLE JAW SLIDE HAMMER PULLER

Product #: **J5049**

- › Versatile puller which will accomplish many pulling jobs involving gears, bearings, outer races, grease retainers, oil seals, etc.
- › Either two or three puller jaws may be used to handle "inside" pulling jobs such as bearing cups and outer racers, as well as regular "outside" pulling jobs.
- › The 5 lbs slide hammer can be removed and used independently.
- › Overall Length: 27".

2-Jaw Spread				3-Jaw Spread			
Inside		Outside		Inside		Outside	
Min.	Max.	Min.	Max.	Min.	Max.	Min.	Max.
1-1/4"	3-1/2"	1"	4-1/2"	1-1/2"	4-1/4"	1-1/2"	4-1/2"

Weight (lbs): 11.00

