



VISIT POWERMATIC.COM FOR MORE DETAILS

PRICES EFFECTIVE JANUARY 1, 2015 – JUNE 30, 2015

POWERMATIC



Table Saws : 4



Drill Press : 6



Mortisers : 7



Bandsaws : 8



Wood Lathes : 10



Planers : 11

WARRANTY AND SERVICE

The Powermatic Promise is something we take very seriously, and the warranty and service aspects are the backbone of the Promise. We work every day to manufacture the best machines in the business. Machines that let you do your best work, and machines that give you the peace of mind that they'll perform for you, year after year. In the rare case that something should go wrong, we're here to resolve your problem quickly, and with the expertise you've come to expect from Powermatic.



PM1000
See details on page 4



Jointers : 12



Shapers : 13



Drum Sander : 14



Power Feeders : 14



Dust Collectors : 15



FIVE YEAR WARRANTY

Powermatic proudly offers a Five Year Warranty on all woodworking machines.

Woodworking machines that are used for commercial or industrial purposes default to a Two Year Warranty.

Powermatic woodworking machinery is designed to be used with wood. Use of these machines in the processing of metal, plastics, or other materials may void the warranty. The exceptions are acrylics and items that are made specifically for wood turning.

SERVICE

If a Powermatic tool needs service or repair, please contact Technical Service by calling 1-800-274-6846, 8AM to 5PM CST, Monday through Friday. Powermatic has Authorized Service Centers located throughout the United States. For the name of an Authorized Service Center in your area call 1-800-274-6846 or use the Service Center Locator at www.Powermatic.com.

MORE INFORMATION

Powermatic is constantly adding new products. For complete, up-to-date product information, check with your local distributor or visit www.Powermatic.com.



NEW

PM1000 TABLE SAW

- A blade surround and collection hose provide an unobstructed path, maximizing dust collection
- Conveniently located hands free power switch
- Tool-less guard assembly with independent side leaves is easy to use, maximizing safety
- The sturdy miter gauge pivots 60 degrees to either side, allowing easy adjustment for a full range of cuts
- Cast iron work surface features a beveled edge
- Exclusive Accu-Fence® provides rigidity and precision
- The poly-V belt drive system reduces vibration and maximizes efficiency
- Chrome plated, ergonomic handwheels make adjustments smooth and easy
- Arbor lock allows for one handed blade changes with minimal tools
- Bevel scale is conveniently located with large, easy to read numbers
- Hinged motor cover provides quick access to the interior of the cabinet

\$1999⁹⁹

STOCK NO. 1791000K



5
YEAR
WARRANTY

STOCK NO.	DESCRIPTION	PRICE
1791000K	PM1000 Tablesaw, 1-3/4HP 1PH 115V, 30" Accu-Fence System w/Riving Knife	\$1,999.99
1791001K	PM1000 Tablesaw, 1-3/4HP 1PH 115V, 52" Accu-Fence System w/Riving Knife	\$2,099.99



115 Volt Power

Wired to bring performance to any shop.



Dust Collection

Uniquely designed system maximizes efficiency.



Accu-Fence

Legendary Powermatic innovation and reliability.

4

VISIT POWERMATIC.COM FOR MORE DETAILS

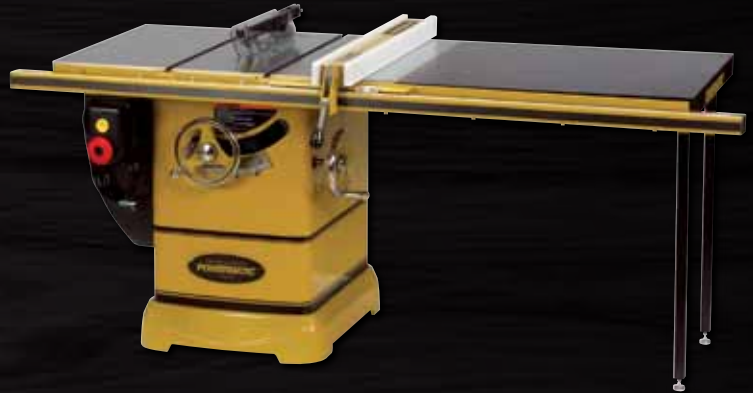
PRICES EFFECTIVE: JANUARY 1, 2015 - JUNE 30, 2015

PM2000 10" CABINET SAWS

- Quick release riving knife greatly reduces binding/kickback risk
- Built-in retractable caster system for immediate shop mobility
- Arbor lock for rapid blade change
- Poly-V drive belt system delivers efficient, quiet operation
- Wide stance heavy-duty trunnion for stability and smooth blade positioning
- Adjustable angle indicators on the blade bevel scale for repeatable bevel cuts
- Industrial-duty Accu-Fence® System ensures accurate cuts
- Enclosed cabinet with cast iron base for rigidity

\$3059⁹⁹

STOCK NO. 1792000K



STOCK NO.	DESCRIPTION	PRICE
1792000K	3HP 1PH 230V, 50" Accu-Fence System	\$3,059.99
1792001K	3HP 1PH 230V, 50" Accu-Fence System, Rout-R-Lift	\$3,364.99
1792002K	3HP 1PH 230V, 30" Accu-Fence System	\$2,959.99
1792003K	3HP 1PH 230V, 30" Accu-Fence System, Rout-R-Lift	\$3,264.99
1792005K	5HP 3PH 230/460V, 50" Accu-Fence System	\$3,059.99
1792006K	5HP 3PH 230/460V, 50" Accu-Fence System, Rout-R-Lift	\$3,589.99
1792007K	5HP 3PH 230/460V, 30" Accu-Fence System	\$2,959.99
1792008K	5HP 3PH 230/460V, 30" Accu-Fence System, Rout-R-Lift	\$3,479.99
1792010K	5HP 1PH 230V, 50" Accu-Fence System	\$3,774.99
1792011K	5HP 1PH 230V, 50" Accu-Fence System, Rout-R-Lift	\$4,149.99
1792012K	5HP 1PH 230V, 30" Accu-Fence System	\$3,699.99
1792013K	5HP 1PH 230V, 30" Accu-Fence System, Rout-R-Lift	\$4,039.99
1792016K	3HP 1PH 230V, 50" Accu-Fence System, Workbench	\$3,589.99
1792017K	5HP 1PH 230V, 50" Accu-Fence System, Workbench	\$4,149.99
1792018K	5HP 3PH 230/460V, 50" Accu-Fence System, Workbench	\$3,589.99

64B TABLESAW

- Riving knife maintains close blade proximity to reduce chance of kickback
- Blade guard and riving knife have quick release for tool-less mounting and removal
- Exclusive Powermatic Accu-Fence maximizes accuracy and safety

\$1599⁹⁹

STOCK NO. 1791229K



STOCK NO.	DESCRIPTION	PRICE
1791229K	64B 10" Tablesaw, 1.5HP 1PH 115/230V, 30" Accu-Fence System w/Riving Knife	\$1,599.99
1791230K	64B 10" Tablesaw, 1.5HP 1PH 115/230V, 50" Accu-Fence System w/Riving Knife	\$1,699.99

POWERMATIC

NEW

PM2800B, 18" VARIABLE SPEED DRILL PRESS

- Mechanical variable speed allows for full range of speed with no belt changes
- 6" of quill travel with one revolution of the handle
- Fence system adjustable for a perfect 90 degree relationship to the table, for rapid alignment of stock
- Adjustable material stop makes repetitive actions accurate and quick
- A digital RPM readout allows the user to optimize the spindle speed to the application
- Laser guides provide an accurate indication for tool point entry
- Keyless chuck makes bit changes easier
- Reversible handles can be mounted on either side of the machine for more comfortable working of the quill
- Redesigned high output LED lighting eliminate shadows
- Work table can be rotated to a full 90 degree position
- Replaceable square table insert with leveling screws make it flush with the top of the table
- Oversize cast iron base for added stability
- Safety key prevents accidental starting

\$1399⁹⁹

STOCK NO. 1792800B



5
YEAR
WARRANTY



Mechanical Variable Speed System

Full range of speed with no belt change.



Quill

6" of quill travel with one revolution of the handle.



Keyless Chuck

Easy to use chuck makes bit changes faster.

PM701 BENCHTOP DELUXE MORTISER

- In-line depth stop allows stopping at pre-set depths without racking the bit to the base
- Heavy-duty reversible handle can be installed to either side of the head without tools
- Stock hold-down with a double lock system, top and side, to eliminate slippage of workpiece
- Quick action cam lock will quickly lock fence in position with one 90° movement
- Two integrated bit and chisel spacers for quick set up
- Large work surfaces on both table and fence for greater stability and accuracy
- Large, hinged chuck door with magnetic catch for rapid access to the chuck
- Rack and pinion design for simple fence adjustments



\$489⁹⁹

STOCK NO. 1791310



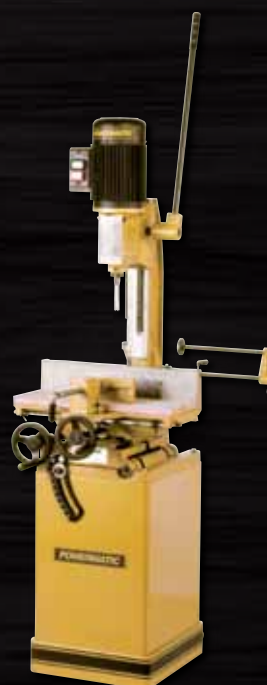
719T TILT TABLE MORTISER WITH STAND

- Sturdy cast iron construction with precision-machined column and table
- Quick position table mounted swiveling vise clamp accommodates angled workpieces
- Feed lever features size positions allowing for quick adjustments
- Table and fence tilt from 0 to 35° for angled mortises
- Gas cylinder controlled rack and pinion system for smooth head raising and lowering
- Hinged chuck door allows easy access for quick bit changes
- Quick adjust depth stop for uniform mortise depths
- Provided 5/8", 3/4" and 1-1/8" bushings allow multiple chisel shank sizes
- Handwheels control smooth linear and cross table motions
- Adjustable work stop for repeat cuts



\$1274⁹⁹

STOCK NO. 1791264K



POWERMATIC

NEW

PM1500 BANDSAW

- 14 ½" of throat and 14" of resaw provide more capacity than a traditional 14" bandsaw
- Sturdy cast iron table and trunnion assembly offers maximum rigidity for heavy work pieces
- Exclusive Powermatic T-Square style Accu-Fence® maximizes accuracy and safety
- The Accu-Fence has complete adjustability for aligning to blade and squaring to table
- Positive locking cam with pressure adjustment
- Oversized side plate can be used in the horizontal or vertical position
- Solid steel resaw pin for optimum rigidity
- Blade tension release with electrical interlock prevents the bandsaw from starting when the blade is de-tensioned or released
- Heavy duty upper wheel support and tracking mechanism for smooth operation
- Solid cast iron upper and lower wheels create the momentum needed for heavy resaw
- High end blade guides with tool-less adjustment provide stability, increasing cut accuracy
- Four sided blade guard for optimum protection
- Integrated foot brake stops a coasting blade

\$2899⁹⁹

STOCK NO. 1791500



5
YEAR
WARRANTY



Motor

Heavy duty 3 horsepower motor provides the power needed for all projects.



Wheels

Solid cast iron upper and lower wheels create the momentum needed for heavy resaw.



Magnetic Switch

Protects the motor from harm due to potential electrical supply issues.

PM1800 BANDSAWS

- Blade tension lever has full tension, partial tension, and release settings for easy blade changes and tracking
- Micro-adjustable, virtually tool-less bearing guide system gives close blade control while reducing friction
- Special grooved thrust bearing stabilizes smaller blades
- Heavy duty Accu-Fence® has adjustable aluminum resaw plate
- Large 24" x 24" cast iron table
- 2" diameter solid steel pin for resaw work
- 18" resaw, and 18" blade to column capacity
- Magnetic starter with power indicator lamp and jumbo stop
- Chrome knobs and handles ensure solid grip and firm locking of parts
- Computer balanced cast iron wheels reduce vibration
- Dual 4" exhaust ports for effective dust and chip removal
- Adjustable miter gauge with stops
- 460V operation requires optional 460V magnetic switch



\$4794⁹⁹

STOCK NO. 1791800

STOCK NO.	DESCRIPTION	PRICE
1791800	PM1800, 18" Bandsaw, 5HP 1PH 230V	\$4,794.99
1791801	PM1800, 18" Bandsaw, 5HP 3PH 230/460V	\$4,794.99

PWBS 14" BANDSAW

- Blade tension lever has full tension, partial tension, and release settings for easy blade changes and tracking
- Chip blower ensures a clean, visible cut line
- Durable micro-adjustable dual bearing blade guide system above and below the table for close blade control with less friction
- Exclusive design, quick-release precision T-square style rip fence with 4" resaw attachment
- Precision balanced, nine spoke cast iron wheels reduce vibration



\$1199⁹⁹

STOCK NO. 1791216K

POWERMATIC

4224B WOOD LATHE

- Sliding headstock with electronic variable speed and digital RPM readout for accurate speed adjustments
- Spindle lock and built in spindle indexing on the headstock for drilling hole patterns, routing flutes, and other equally spaced features
- Vacuum system provides quick method of chucking bowl blanks
- Air nozzle with quick connect for clearing dust and chips
- Set of dead centers which hold a spindle for visual comparison
- Quad system provides 115 volt electrical supply
- Magnetic-backed remote on/off switch can be moved anywhere the machine
- Powerful 3HP motor



\$7499⁹⁹

STOCK NO. 1794224K



20" WOOD LATHES

- Headstock slides the full length of the bed
- Electronic variable speed with reversing and RPM readout
- Spindle lock and built in spindle indexing on the headstock for drilling hole patterns, routing flutes, and other equally spaced features
- Comparator allows user to visually replicate projects
- Chrome trimmed handwheels are ergonomic for a comfortable feel
- Powerful 2HP motor



\$3999⁹⁹

STOCK NO. 1352001



OPTIONAL LAMP KIT

STOCK NO. 6294901K



STOCK NO.	DESCRIPTION	PRICE
1352001	3520B Lathe, 2HP, Will Operate 1PH or 3PH, 230V	\$3,999.99
1792020	PM2020 Short Bed Lathe, 2HP, Will Operate 1PH or 3PH, 230V	\$3,899.99

15HH PLANER

- The Byrd® helical cutterhead with 74 four-sided knife inserts provides smoother, quieter cutting and finer finish than conventional systems
- Powerful 3HP TEFC motor controlled with a magnetic switch for safety
- Three V-belts transfer maximum power to the cutterhead
- Serrated steel infeed roller and smooth steel outfeed roller allow for 1/8" maximum depth of cut and trouble free operation
- Large cast iron handwheel positions table quickly and easily
- Large, precision ground cast iron table and extensions provide maximum workpiece support
- Two speed gearbox features automatic chain tensioner
- One-piece welded steel stand has built-in lockable casters
- Steel top-mounted return rollers speed repetitive cuts



\$3059⁹⁹

STOCK NO. 1791213



209 AND 209HH PLANERS

- 5HP motor and 20" planing capacity for heavy duty work
- Fully enclosed base cabinet with integrated casters for shop mobility
- Cast iron table with extensions creates a big 55-1/2" x 20" working area
- Four feed speeds - 24 and 31 FPM, 16 and 20 FPM with gear change provide versatility
- Feed rollers and cutterhead supported by full cast iron head assembly for rigidity
- 460V operation requires optional 460V magnetic switch



\$2854⁹⁹

STOCK NO. 1791296



STOCK NO.	DESCRIPTION	PRICE
1791296	209, 20" Planer, 5HP 1PH 230V	\$2,854.99
1791297	209, 20" Planer, 5HP 3PH 230/460V	\$2,839.99
1791315	209HH-1, 20" Planer, 5HP 1PH 230V, Byrd SHELIX Head	\$4,284.99
1791316	209HH-3, 20" Planer, 5HP 3PH 230/460V, Byrd SHELIX Head	\$4,284.99

POWERMATIC

60C AND 60HH JOINTERS

- Extra long tables are mounted on dovetailed ways, for extended workpiece support
- Adjustment lever offers quick infeed table positioning and fine-tuning of cut depth
- High mount switch for operator convenience
- Handwheel operated worm gear system for smooth fence tilting
- Non-mar fence insert protects table surface

\$1939⁹⁹

STOCK NO. 1610084K



STOCK NO.	DESCRIPTION	PRICE
1610084K	60C, 8" Jointer, 2HP 1PH 230V, Magnetic Switch	\$1,939.99
1610086K	60HH, 8" Jointer, 2HP 1PH 230V, Magnetic Switch, Helical Cutterhead	\$2,244.99

54A AND 54HH 6" DELUXE JOINTERS

- 66" long adjustable infeed and outfeed beds mounted on dovetailed ways
- Features exclusive controlled chip cutterhead with three quick-set knives, or helical cutterhead with carbide inserts
- Powermatic® exclusive, to control kick back 38" extra-long fence
- New fine/quick adjustment lever on infeed table for precision cuts
- Spring-loaded front guard and fixed rear guard
- Two-way tilting fence with positive stops at 45 degrees and 90 degrees

\$1019⁹⁹

STOCK NO. 1791279DXK



STOCK NO.	DESCRIPTION	PRICE
1791279DXK	54A, 6" Jointer, 1HP 1PH 115/230V, Quick-Set Knives	\$1,019.99
1791317K	54HH 6" Jointer, 1HP 1PH 115/230V, Helical Cutterhead	\$1,429.99

PJ882 8" PARALLELOGRAM JOINTERS

- 2HP, 1Ph motor
- Large 8" x 82" table surface
- 1/8" depth of cut limiter control knob
- Worm gear hand wheel fence tilting (Patented)
- High mount switch
- No-mar fence insert

\$2244⁹⁹

STOCK NO. 1610079



STOCK NO.	DESCRIPTION	PRICE
1610079	PJ-882, 8" Parallelogram Jointer, 2HP 1PH 230V	\$2,244.99
1610082	PJ-882HH, 8" Parallelogram Jointer, 2HP 1PH 230V, Helical Cutterhead	\$3,059.99

PM2700 SHAPERS

- Integrated caster system built into the cast iron base for instant shop mobility
- Spindle height digital readout for making fine incremental adjustments on multiple passes
- Heavy duty 30" x 40" precision ground tabletop for smooth stock feeding
- Convenient quick lock belt tensioning for easy speed adjustment
- Industrial fence system with fine adjust dials for more precise positioning
- 3HP totally enclosed motor offers plenty of power
- Two spindle speeds (reversible) for a variety of work
- Superior clear cutter guard promotes safety, allows observation of the entire cut

\$3674⁹⁹

STOCK NO. 1280100C



STOCK NO.	DESCRIPTION	PRICE
1280100C	PM2700 Shaper, 3HP 1PH 230V, DRO, Casters	\$3,674.99
1280101C	PM2700 Shaper, 5HP 1PH 230V, DRO, Casters	\$3,879.99
1280102C	PM2700 Shaper, 5HP 3PH 230/460V, DRO, Casters	\$3,879.99

POWERMATIC

25" DUAL DRUM SANDER

- 5HP, 1PH, 230V
- Independently adjustable rear drum
- Hard durometer rubber coating on steel drums
- Two-speed gearbox
- Full size cast iron table
- Forward/reverse conveyor belt
- Dual dust collection with directional baffles

\$4284⁹⁹

STOCK NO. 1791290



POWER FEEDERS

- Continuous-duty motor
- Fully adjustable support columns
- Solid cast iron construction provides stability and eliminates vibration

\$1019⁹⁹

STOCK NO. 1790800K



STOCK NO.	DESCRIPTION	PRICE
1790800K	PF-33 Power Feeder, 1HP 3PH 230V, 4-Speed, 3 Wheel	\$1,019.99
1790807K	PF-31 Power Feeder, 1HP 1PH 115V, 4-Speed, 3 Wheel	\$1,119.99
1790811K	PF-43 Power Feeder, 1HP 3PH 230V, 4-Speed, 4 Wheel	\$1,124.99
1790812K	PF-41 Power Feeder, 1HP 1PH 115V, 4-Speed, 4 Wheel	\$1,224.99
1790818	PF3-JR Power Feeder, 1/4HP 1PH 115V, 3 Wheel	\$679.99

TURBO CONE DUST COLLECTORS

- Remote-controlled digital timer can be programmed for up to 99 minutes
- All-metal duct construction for rigidity and improved air flow
- Multiple 4" dust ports for simultaneous collection from different machines
- TurboCone improves chip separation and collector bag packing efficiency
- The cone eliminates premature filter clogging for sustained performance
- Canister filter offers over six times filtering surface area of standard bags

\$599⁹⁹

STOCK NO. 1791078K



\$1099⁹⁹

STOCK NO. 1792071K



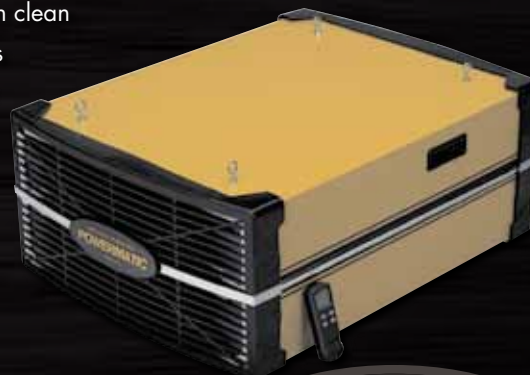
STOCK NO.	DESCRIPTION	PRICE
1791078K	PM1300TX-BK, 1.75HP, 1PH, w/Bag Filter Kit	\$599.99
1791079K	PM1300TX-CK, 1.75HP, 1PH, w/Canister Kit	\$849.99
1792071K	PM1900TX-BK1, 3HP, 1PH, w/Bag Filter Kit	\$1,099.99
1792072K	PM1900TX-CK1, 3HP, 1PH, w/Canister Kit	\$1,299.99
1792073K	PM1900TX-BK3, 3HP 3PH, w/Bag Filter Kit	\$1,099.99
1792074K	PM1900TX-CK3, 3HP 3PH, w/Canister Kit	\$1,299.99

PM1200 AIR FILTRATION SYSTEM

- Two-filter system traps particles as small as 1 micron
- Remote control operates on radio frequency for wider range of effectiveness
- Timer has nine settings, for up to nine hours of continuous operation
- Inner filter has fine mesh pockets for high efficiency, can be blown clean
- Indicator lights up after 200 hours to remind user to replace filters
- Fully enclosed motor has overload protection for long service life
- Four eye bolts allow suspension from shop ceiling

\$439⁹⁹

STOCK NO. 1791330



POWERMATIC



FOR MORE INFORMATION GO TO POWERMATIC.COM
PRICES EFFECTIVE JANUARY 1, 2015 – JUNE 30, 2015

OFFER AVAILABLE AT PARTICIPATING DEALERS ONLY WHILE SUPPLIES LAST. JPW Industries, Inc. reserves the right to correct any pricing, product specifications or image discrepancies.
©2014 JPW Industries, Inc. All Rights Reserved. Printed in the U.S.A. The color GOLD is a registered trademark of JPW Industries, Inc.
Stock No. 904593 160K Jan-15

JPW Industries, Inc.
Laverne, TN 37086 U.S.A.
powermatic.com